

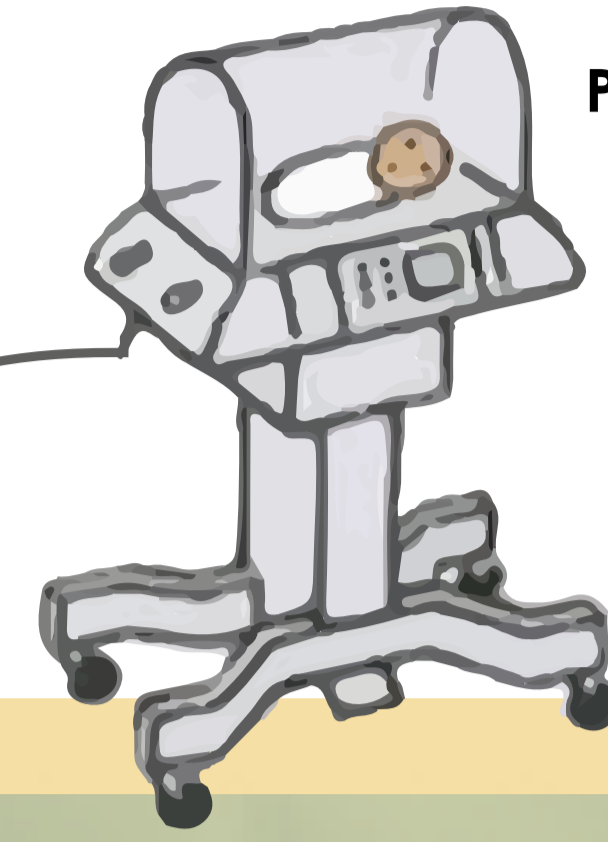
# PREMATURE BIRTH

## SUPPORTING PARENT AND INFANT ATTACHMENT

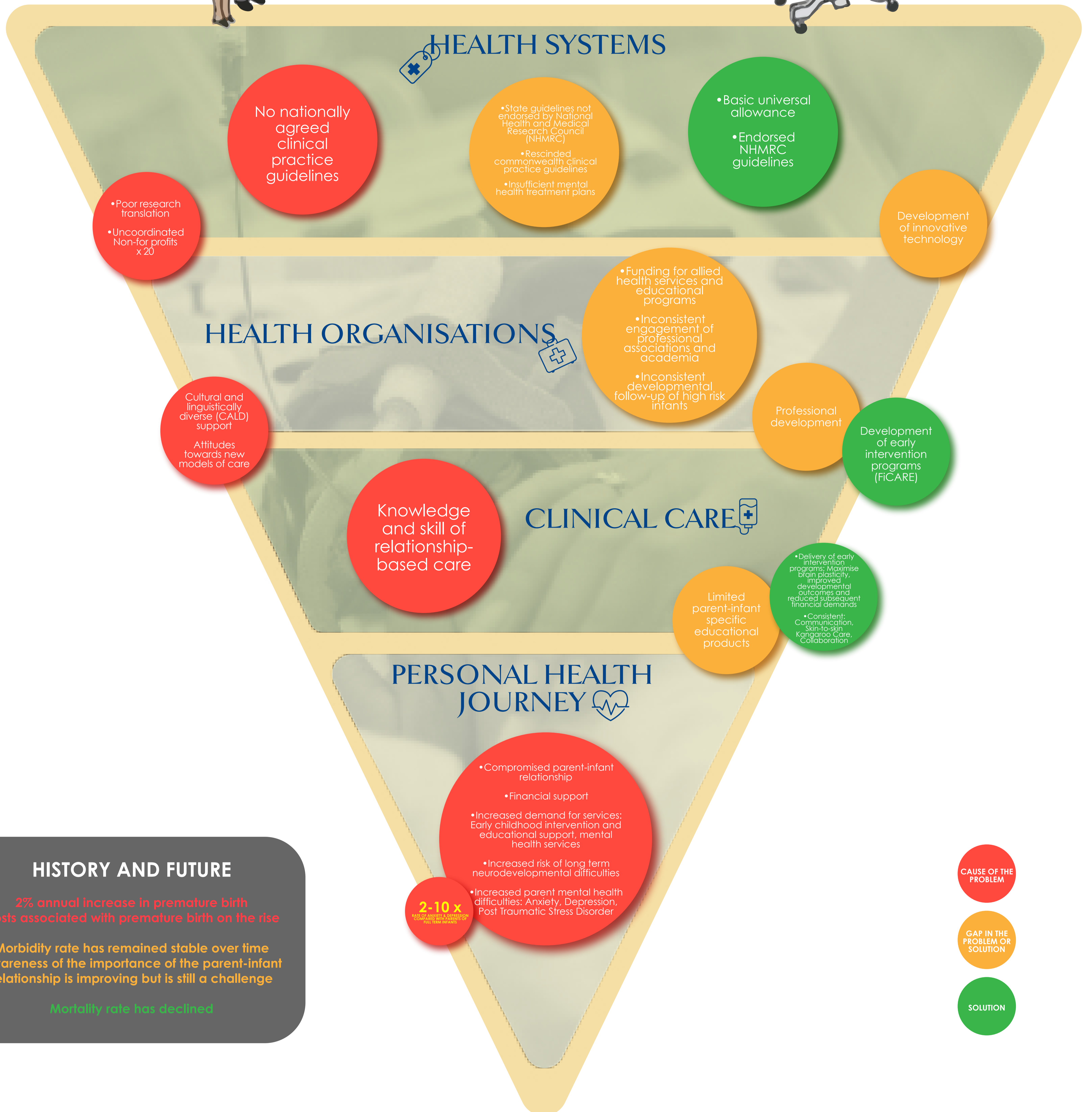
Separation from infant  
Psychological distress



Compromised parent-infant relationship



Premature infant brain development



### KEY LESSONS LEARNT LEVERS FOR CHANGE

- Guideline funding and research translation
- Wider implementation of models of care that support the development of the parent-infant attachment relationship
- Improved research collaboration
- Greater health professional education on relationship-based care
- Addressing staff attitudes and culture as they adjust to new models of care is fundamental to success